



13 Millgate Court Guildford Road , Farnham, GU9 9PP

A spacious top (second) floor 2 double bedroom flat with views situated on the outskirts of Farnham town centre. The flat has 2 bathrooms and parking and is sold with no onward chain.

Price Guide £285,000

13 Millgate Court Guildford Road , Farnham, GU9 9PP



- Communal entrance with entry phone
- Double aspect sitting/dining room
- Double bedroom 2
- Close to Farnham town centre
- Second (top) floor with views
- Kitchen/breakfast room
- Bathroom
- Entrance hall with storage cupboard
- Bedroom 1 with en suite shower room
- Parking



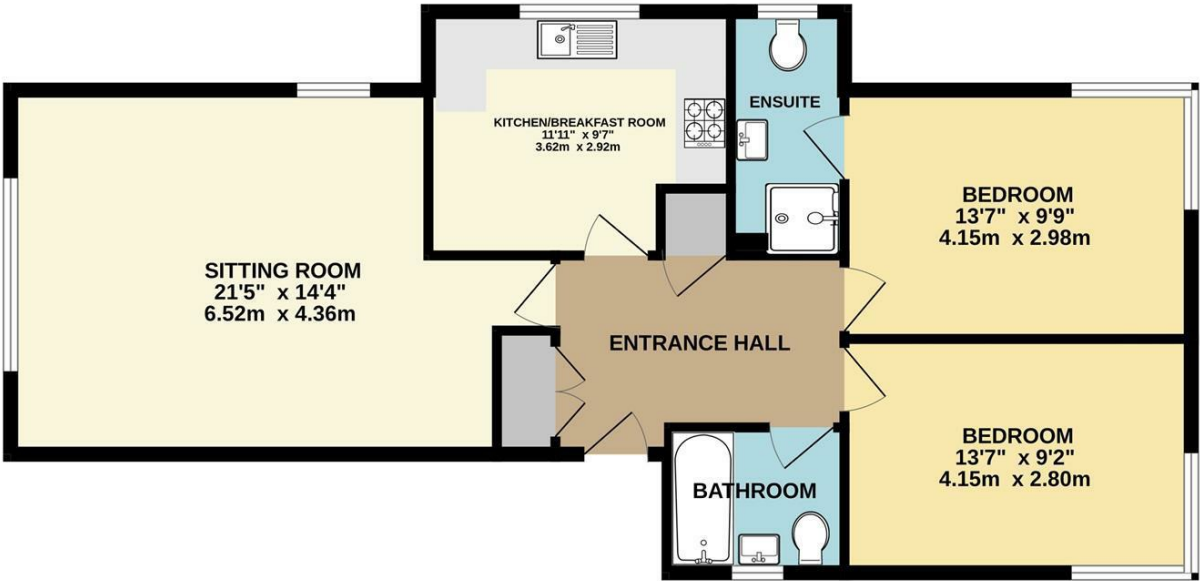
[Directions](#)





Floor Plan

GROUND FLOOR
808 sq.ft. (75.1 sq.m.) approx.



TOTAL FLOOR AREA : 808 sq.ft. (75.1 sq.m.) approx.
Whilst every attempt has been made to ensure the accuracy of the floorplan contained here, measurements of doors, windows, rooms and any other items are approximate and no responsibility is taken for any error, omission or mis-statement. This plan is for illustrative purposes only and should be used as such by any prospective purchaser. The services, systems and appliances shown have not been tested and no guarantee as to their operability or efficiency can be given.
Made with Metropix ©2024



These particulars, whilst believed to be accurate are set out as a general outline only for guidance and do not constitute any part of an offer or contract. Intending purchasers should not rely on them as statements of representation of fact, but must satisfy themselves by inspection or otherwise as to their accuracy. No person in this firms employment has the authority to make or give any representation or warranty in respect of the property.

